



*"We reconcile nature and engineering"*

[www.melzer-hopfner.at](http://www.melzer-hopfner.at)



# MELZER & HOPFNER



>30

Years Experience

4+

Countries

>300

Realized Projects



## About us"

Melzer & Hopfner Ingenieur-GmbH & Co. KG has decades of relevant experience in ski area and cable car planning.

We plan the ideal cable car project with you on the mountain and in the city. In addition to our own core competencies in the area of ski area, cable car and building construction planning as well as construction management, we can draw on an experienced network of experts. In doing so, we span the spectrum from the feasibility study to the commissioning of the railway.





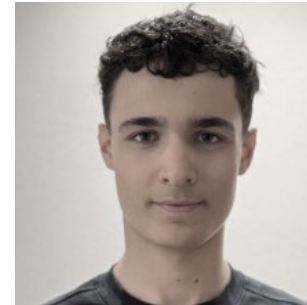
**Daniel Mangold** – Management –

**Johannes Thißen**

## We for You

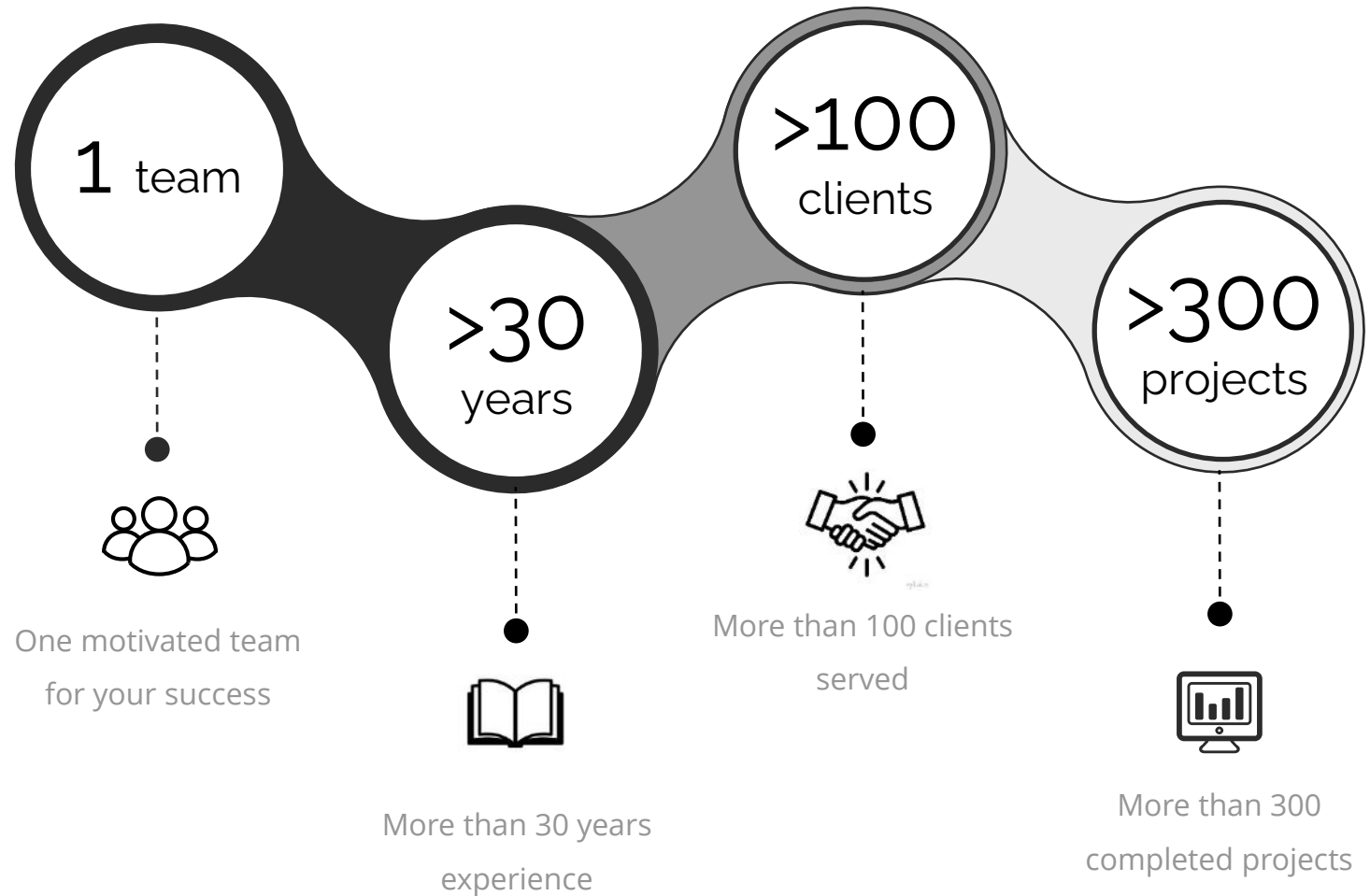
Our office is in Bregenz, near the beautiful Lake Constance. Here we bring your ropeway idea to reality with our long-standing and experienced team.

## Our Team "



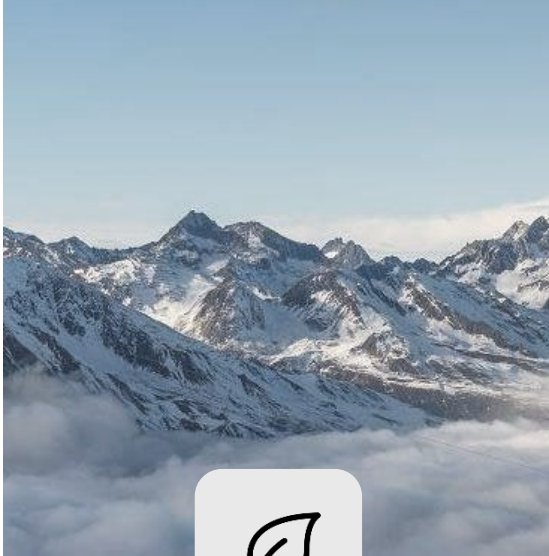


We are highly motivated to develop ropeway visions together with you in order to realize a coherent and timeless overall project.





## - Our Philosophy -



### **Symbiosis of Nature and Engineering**

We stand for modern technology,  
timeless design and regional thinking



### **From Function To Design**

Every project begins with well thought-out  
and optimized functional processes. These  
lead to a modern and contemporary  
architecture.



### **Profitability**

In addition to the technical  
feasibility, we focus on economical  
and cost-effective solutions



### **Loyalty**

We are loyal in all areas - to our  
customers but also to our employees

## "Service"



## Feasibility Studies

Interdisciplinary global assessment

- Technical assessment of Status Quo
- Development of possible improvement, extension and connection options
- 3D Visualization
- Cost estimations



## Cable Car Planning

Preliminary draft, Solicitation, detail planning

- Planning of station building considering all needs of the cable
- car operation and its guests
- Submission and detail planning
- Tendering, awarding and contract generation



## Visualizations

Renderings, animations, photorealistic situation visualizations

- Architectural visualization
- Terrain change plots
- Industrial visualization
- Sun position analysis with shadows



## Construction Planning

Preliminary draft, Building design, Solicitation, Approval

- Variant studies of cable car technology
- Coordination with experts and authorities
- Tendering, awarding and contract generation
- Submission to the relevant authorities



## Construction Supervision

General and technical site supervision

- Scheduling and construction supervision
- Acceptance of delivered system and conformity



## Print and Scan

General and technical site supervision

- Scheduling and construction supervision
- Acceptance of delivered system and conformity



© Gletscherbahnen Kaprun AG



© Doppelmayr Seilbahnen GmbH

## Mountainside Architecture"

Melzer & Hopfner plans contemporary architectural projects with you and plans effective solutions for difficult terrain.



© Gletscherbahnen Kaprun AG



© Schilift-Zentrum-Gerlos GmbH



[Video 3K Kitzsteinhornliner](#)



[Video Kohlmaisbahn](#)



[Video Stuanmandlbahn](#)



[Video Gletscherjet 3+4](#)





© Schilift-Zentrum-Gerlos GmbH



© Gasteiner Bergbahnen AG

## Mountainside Architecture"

Melzer & Hopfner plans contemporary architectural projects with you and plans effective solutions for difficult terrain.



© Melzer & Hopfner Ingenieurgesellschaft mbH & Co.KG



© Doppelmayr Seilbahnen GmbH



[Video Stuanmandlbahn](#)



[Video Schlossalmbahn](#)



[Video 12er Bahn Fiss](#)



[Video Muldenbahn](#)







© Hinterglemmer Bergbahnen GmbH



© Saalbacher Bergbahnen GmbH

## Mountainside Architecture"

Melzer & Hopfner plans contemporary architectural projects with you and plans effective solutions for difficult terrain.



© Hinterglemmer Bergbahnen GmbH



© Saalbacher Bergbahnen GmbH



[Video 12er Kogelbahn](#)



[Video Kohlmaisbahn](#)



# MELZER & HOPFNER



- *Aktuellste Referenzen* -



© Hinterglemmer Bergbahnen GmbH

**CATEGORY**  
Cable car

**BUILDER**  
Hinterglemmer Bergbahnen GmbH  
[www.saalbach.com](http://www.saalbach.com)

**TYPE OF ROPEWAY**  
detachable 10-seater gondola lift

**YEAR OF CONSTRUCTION**  
2024

**MANUFACTURER**  
Doppelmayr Seilbahnen GmbH  
<http://www.doppelmayr.com/>

**CAPACITY**  
2,600 P/h

**DRIVING SPEED**  
6,5 m/s

**HIGH DISTANCE**  
875,10

**ROPE DIAMETER**  
56mm



© Bergbahnen Fieberbrunn GmbH

**CATEGORY**  
Cable car

**BUILDER**  
Bergbahnen Fieberbrunn GmbH  
[www.fieberbrunn.com](http://www.fieberbrunn.com)

**TYPE OF ROPEWAY**  
10er Kabinenbahn

**YEAR OF CONSTRUCTION**  
2024

**MANUFACTURER**  
Doppelmayr Seilbahnen GmbH  
<http://www.doppelmayr.com/>

**CAPACITY**  
2,500 P/h

**DRIVING SPEED**  
6,0 m/s

**HIGH DISTANCE**  
1st TS – 371.10m | 2nd TS – 434.95m

**ROPE DIAMETER**  
50mm



© Melzer & Hopfner

**CATEGORY**  
Chairlift

**BUILDER**  
Schifflift-Center-Gerlos GmbH  
[www.zillertalarena.com/gerlos/](http://www.zillertalarena.com/gerlos/)

**TYPE OF ROPEWAY**  
detachable 8-seater chairlift

**YEAR OF CONSTRUCTION**  
2024

**MANUFACTURER**  
Doppelmayr Seilbahnen GmbH  
<http://www.doppelmayr.com/>

**CAPACITY**  
2750 P/h Final expansion

**DRIVING SPEED**  
5,0 m/s

**HIGH DISTANCE**  
221,80m

**ROPE DIAMETER**  
48 mm



© Bergbahnen Nassfeld Pramollo AG

**CATEGORY**  
Chairlift

**BUILDER**  
Nassfeld Pramollo AG cable cars  
[www.nassfeld.at](http://www.nassfeld.at)

**TYPE OF ROPEWAY**  
detachable 6-seater chairlift

**YEAR OF CONSTRUCTION**  
2024

**MANUFACTURER**  
Doppelmayr Seilbahnen GmbH  
<http://www.doppelmayr.com/>

**CAPACITY**  
3000 P/h Final expansion

**DRIVING SPEED**  
6,0 m/s

**HIGH DISTANCE**  
450,00m

**ROPE DIAMETER**  
50 mm





© Stubner FremdenverkehrsgesmbH

**CLIENT**  
Stubner Fremdenverkehrs GmbH  
[www.bergbahnen-stuben.com](http://www.bergbahnen-stuben.com)

**ROPEWAYTYPE**  
detachable 8 seater gondolalift

**CONSTRUCTION YEAR**  
2023

**MANUFACTURER**  
Doppelmayr Seilbahnen GmbH  
<http://www.doppelmayr.com>

**CAPACITY**  
1.600 p/h

**ROPE SPEED**  
5,0m/s

**HEIGHT DIFFERENCE**  
440,00m

**ROPE DIAMETER**  
48mm



© Andreas Putz

**CLIENT**  
Saalbacher Bergbahnen GmbH  
[www.saalbach.com](http://www.saalbach.com)

**ROPEWAYTYPE**  
detachable 8 seater chairlift

**CONSTRUCTION YEAR**  
2023

**MANUFACTURER**  
Doppelmayr Seilbahnen GmbH  
<http://www.doppelmayr.com>

**CAPACITY**  
3.600 p/h

**ROPE SPEED**  
6,0m/s

**HEIGHT DIFFERENCE**  
449,50m

**ROPE DIAMETER**  
54mm



© Doppelmayr Seilbahnen GmbH

**CLIENT**  
Bergbahnen Turracher Höhe GmbH  
[www.turracherhoehe.at](http://www.turracherhoehe.at)

**ROPEWAYTYPE**  
detachable 6 seater chairlift

**CONSTRUCTION YEAR**  
2023

**MANUFACTURER**  
Doppelmayr Seilbahnen GmbH  
<http://www.doppelmayr.com>

**CAPACITY**  
2.450 p/h

**ROPE SPEED**  
5,0m/s

**HEIGHT DIFFERENCE**  
111,27m

**ROPE DIAMETER**  
43mm



© Melzer & Hopfner Ingenieurgesellschaft

**CLIENT**  
Liftgesellschaft Altastenberg GmbH  
[www.ski-altastenberg.de](http://www.ski-altastenberg.de)

**ROPEWAYTYPE**  
fixgripped 4 seater chairlift

**CONSTRUCTION YEAR**  
2023

**MANUFACTURER**  
Doppelmayr Seilbahnen GmbH  
<http://www.doppelmayr.com>

**CAPACITY**  
2373 p/h

**ROPE SPEED**  
2,20m/s

**HEIGHT DIFFERENCE**  
100,75 m

**ROPE DIAMETER**  
36mm



# MELZER & HOPFNER



- *Current references* -



© Leoganger Bergbahnen GmbH

**CLIENT**  
Leoganger Bergbahnen GmbH  
<http://www.saalfelder-leogang.com>

**ROPEWAYTYPE**  
detachable 8 seater chairlift

**CONSTRUCTION YEAR**  
2022

**MANUFACTURER**  
Doppelmayr Seilbahnen GmbH  
<http://www.doppelmayr.com>

**CAPACITY**  
3700 p/h

**ROPE SPEED**  
6,0m/s

**HEIGHT DIFFERENCE**  
236,50m

**ROPE DIAMETER**  
48mm



© Fisser Bergbahnen GmbH

**CLIENT**  
Fisser Bergbahnen GmbH  
<http://www.serfaus-fiss-ladis.at>

**ROPEWAYTYPE**  
detachable 8 seater chairlift

**CONSTRUCTION YEAR**  
2022

**MANUFACTURER**  
Doppelmayr Seilbahnen GmbH  
<http://www.doppelmayr.com>

**CAPACITY**  
3000 p/h

**ROPE SPEED**  
6,0m/s

**HEIGHT DIFFERENCE**  
607,00m

**ROPE DIAMETER**  
54mm



© Planai Hochwurzten Bahnen GmbH

**CLIENT**  
Planai-Hochwurzten-Bahnen GmbH  
<http://www.plani.at>

**ROPEWAYTYPE**  
detachable 8 seater chairlift

**CONSTRUCTION YEAR**  
2022

**MANUFACTURER**  
LEITNER ropeways  
<http://www.leitner-ropeways.com>

**CAPACITY**  
3500 p/h

**ROPE SPEED**  
5,5m/s

**HEIGHT DIFFERENCE**  
422,10m

**ROPE DIAMETER**  
52mm



© Hintertglmmer Bergbahnen GmbH

**CLIENT**  
Hintertglmmer Bergbahnen GmbH  
<http://www.saalbach.com>

**ROPEWAYTYPE**  
detachable 10 seater gondolalift

**CONSTRUCTION YEAR**  
2019

**MANUFACTURER**  
Doppelmayr Seilbahnen GmbH  
<http://www.doppelmayr.com>

**CAPACITY**  
3500 p/h

**ROPE SPEED**  
6,5m/s

**HEIGHT DIFFERENCE**  
465,00m



**ROPE DIAMETER**  
52mm



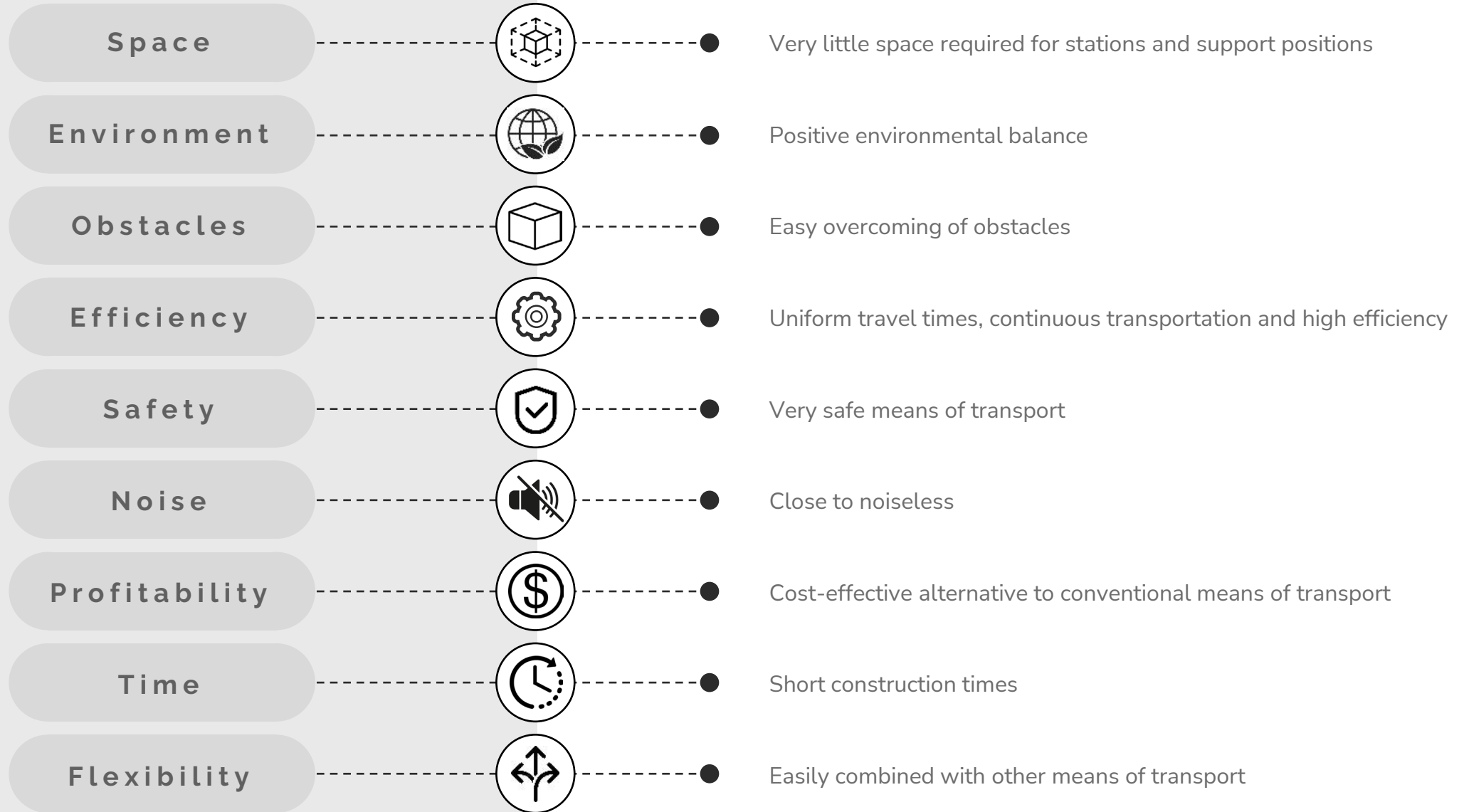


## Urban Cable Cars"

Melzer & Hopfner specializes in the planning of cable car transportation services in urban settings.

-  [Urban Cable Cars – Video](#)
-  [Linea Roja - Video](#)



**- Advantages -**

# Thank you"

PLEASE FEEL FREE  
TO CONTACT US

**MELZER & HOPFNER**



[office@melzer-hopfner.at](mailto:office@melzer-hopfner.at)

Tel: +43 557470370